

The ACGR National HDR Researcher Development Framework supports the training of HDR candidates to be well-rounded and independent researchers who embody the qualities outlined in the following four domains and aligned key competencies.

Domain 1

Ethical Practice & Inclusivity

Ethical and inclusive researchers who value integrity, diversity, and respectful engagement across people, knowledges, and cultures

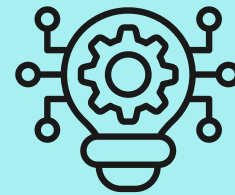


- Engage in ethical and responsible research practice, conducted with integrity
- Respect discipline diversity and plurality of research approaches
- Embrace diversity of researcher experience
- Respect and engage appropriately with Indigenous peoples and knowledges
- Embrace cultural difference, viewpoint diversity, and sustainability, fostering a global outlook
- Ensure the safety and wellbeing of self, others, animals, and environments, through good governance and data management

Domain 2

Innovation & Intellectual Rigour

Innovative and intellectually rigorous researchers who advance knowledge through critical thinking, creativity, and robust evidence-based inquiry

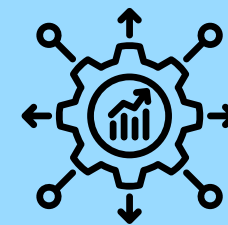


- Produce good academic judgment based on critical, reflexive and creative thinking
- Integrate disciplinary expertise and specialist knowledge
- Create new knowledge through the collection and analysis of complex information
- Utilise sophisticated digital environments and tools
- Produce scholarly works that convey new knowledge and demonstrate expertise

Domain 3

Engagement and Impact Beyond Academia

Impactful researchers who partner with industry and academia to deliver research outcomes that create real-world value



- Embed impact and engagement objectives in research design
- Cultivate a professional identity grounded in research reputation
- Form effective working relationships with community, industry and university partners in research
- Communicate research outcomes and knowledge transfer across diverse modalities, audiences and contexts
- Manage projects, including planning, oversight and data management
- Navigate and balance complex institutional, disciplinary, regulatory, and collaborative environments

Domain 4

Personal Resilience & Leadership

Resilient researchers and leaders who adapt to challenges, support others, and drive progress with purpose and confidence



- Critically reflect on practice to develop a professional identity and exercise accountability
- Build strategic relationships to access innovative information, ideas and opportunities
- Maintain composure and solution-focus in managing professional challenges
- Prioritise personal wellbeing, encourage others to do the same