

Support Services

Australian Council of Graduate Research Inc.
16th March 2018



THE UNIVERSITY
OF QUEENSLAND
AUSTRALIA

Create change



Your wellbeing

- www.1800respect.org.au
- Various state-based services
- Your university staff support service
- Lifeline 13 11 14

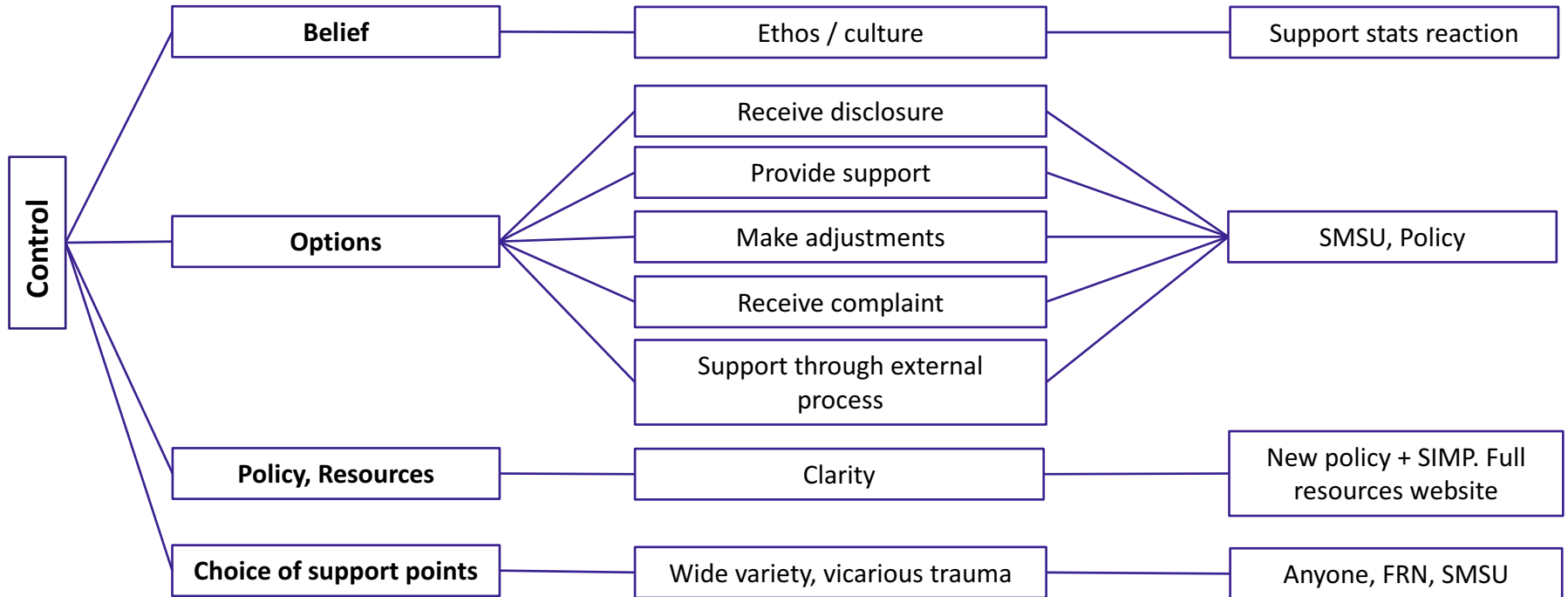
The next 20 minutes

- RNA recommendations
- Trauma-informed approach and its translation
- Tensions in providing support
 - Vicarious liability
 - Safety of others
 - Reputation
 - Natural justice
 - Risks

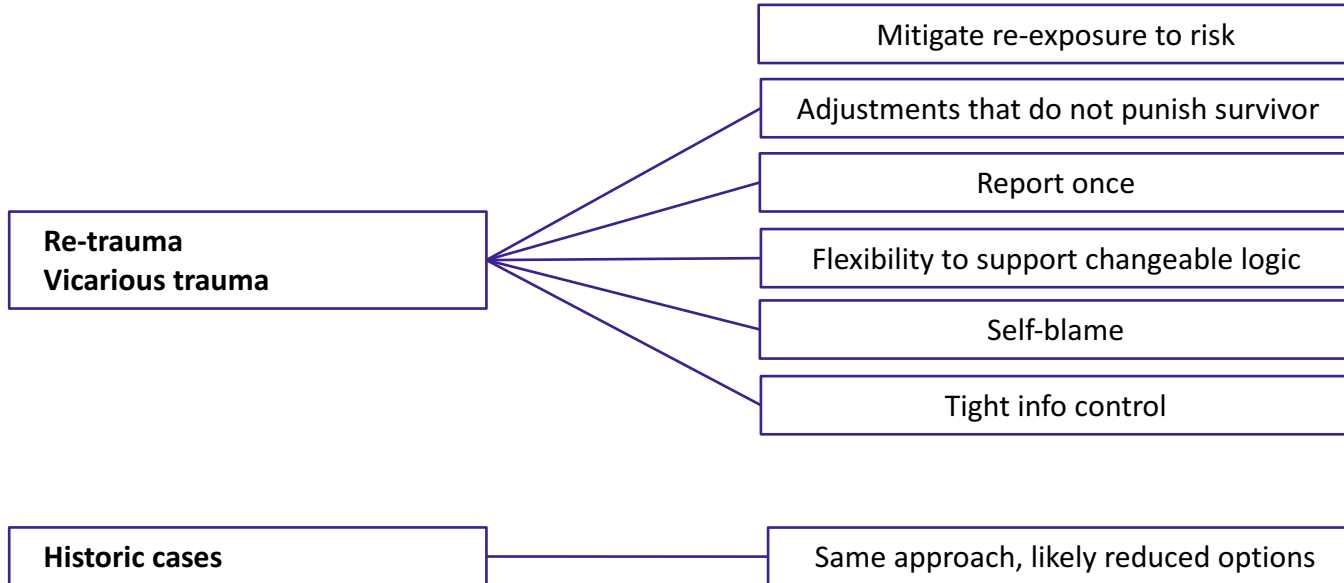
RNA recommendations

- Prevention via education
- Clarity on support services
- Appropriate counselling expertise
- Training for those receiving disclosures
- Review of university policy
- VC advisory body, action plan
- Process improvement via systematic data
- Repeat national survey
- Residential college review of practice, culture

Trauma-informed approach



Trauma-informed approach



Policy and unit

Policy

- Student, Staff, All
- Linked to other policy or all-encompassing?
- Legislation

Unit

- Student / Staff / All
- Separate from student's environment, but clear, accessible
- Composition
- Investigation
- Community trainer / educator / support network coordinator
- Information-sharing

Tensions

- Trauma-informed approach
- Vicarious Liability / safety of others / reputation
- Natural Justice
- Risks

Prevention and education

- Sense of Entitlement
- Consent
- Culture, setting expectations
- Building community that is porous
- The value of reporting
- Bystander training

A university community effort

